

The cover features a white background with three overlapping squares: a large blue square on the left, a green square on the top right, and a yellow square on the bottom left. Each square contains a thin border of the same color. The text 'APLA Health' is centered in the blue square, and '2020 Annual Report' is in the bottom right corner.

APLA
Health

2020
Annual Report

WELCOME

A LETTER FROM OUR LEADERSHIP

We are pleased to present to you—our most loyal supporters—the 2020 APLA Health Annual Report.

2020 was a year unlike any other. Everyone has experienced COVID-19 in a unique way, and APLA Health has made steps to mitigate the damage it has done.

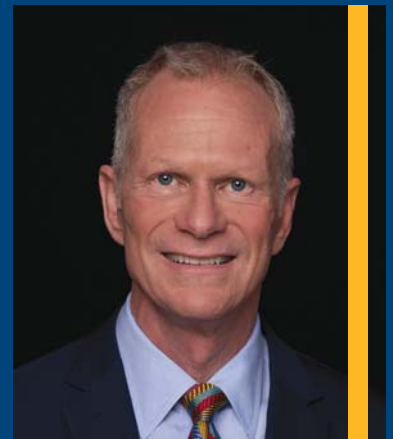
We have provided services via telehealth, with 100 percent of behavioral health now online and experiencing decreases in no-show rates. We made AIDS Walk LA a 100 percent virtual experience, smashing through fundraising goals. We began to offer at-home testing for STDs and HIV, creating a safe option to maintain sexual health.

COVID-19 also highlighted something that APLA Health already knew. There are still health care barriers for Black and Latino communities in Los Angeles County. In 2022, we will open APLA Health Center CDU/ MLK Medical Campus, that has the potential to serve more than 2,200 residents in the Compton, Willowbrook and Watts communities and our Out Here Sexual Health Center in Baldwin Hills.

Unfortunately, 2021 commemorates a milestone we all hoped we would never have: the 40th anniversary of the HIV and AIDS epidemic. Throughout those 40 years, we have worked hard to end the epidemic and continue to expand our services and partnerships to meet our community's needs. Thanks to your support, we've been able to make real strides in reaching the end of HIV and ensuring more members of our community have access to culturally competent health care.



Peter Perkowski, Board Chair



Craig E. Thompson, CEO

A handwritten signature in white ink, appearing to read 'Peter Perkowski'.

Peter Perkowski
Board Chair

A handwritten signature in white ink, appearing to read 'Craig E. Thompson'.

Craig E. Thompson
CEO

TABLE OF CONTENTS

Doubling Down	2
A Concrete Expression	4
Growing to Match the Need	5
APLA Health Commits to Anti-Racism	6
Moving Together	7
Innovating to End the Epidemics	8
By the Numbers	9
Board of Directors	10
APLA Health Team	11
Auditors' Report & Financial Statement	12
Planned Giving	14
Locations	29

DONOR LISTS

Foundation & Corporate Support	15
AIDS Walk LA 2020 Sponsors	16
AIDS Walk LA 2020 Star Walkers & Teams	17
Leadership Circle	18
Heartbeat Monthly Giving Circle	20
Legacy Society	22
Beneficence Society	24
Guardian Society	26

MISSION STATEMENT

APLA Health's mission is to achieve health care equity and promote well-being for the LGBT and other underserved communities and people living with and affected by HIV.

DOUBLING DOWN: ADDRESSING INEQUITY IN THE FACE OF CRISIS

APLA Health exists because America's health care system has never worked for all Americans. The emergence of HIV/AIDS in the 1980s—and the mainstream medical establishment's callous dismissal of our community's needs and lives—brought this reality home for many of us. It was to address this unconscionable disparity, in health care and in access to the basic necessities of life, that AIDS Project Los Angeles (APLA Health) was created. Decades later, APLA Health remains at the forefront of efforts to address the disparities that leave too many members of our LGBTQ+ family excluded, marginalized, and without access to essential care.

These persistent disparities were thrown into stark relief as the COVID-19 pandemic swept through local communities in 2020. People who were already pushed to the margins of society—by bigotry, by stigma, and by racism—were hit hardest by the novel disease. This story of disproportionate impacts is one our community knows too well. That's why APLA Health moved quickly and decisively to keep patients, clients, and staff safe in the face of the pandemic. Practically overnight, services were taken online, innovative solutions were developed and launched, and—most importantly—critical care remained safely accessible. Whether we were someone's health care provider, their safety net, or their lifeline—APLA Health was there for them, safe, dependable, and welcoming.





Moments of crisis make systemic inequity glaringly visible. But 2020 afforded APLA Health both the responsibility and the opportunity to face racism in health care head on—and to take a more deliberate approach to dismantling it.

APLA Health has always been about serving the members of this community—our family—who are marginalized, left out, and pushed aside. About giving LGBTQ+ people access to the absolute top-quality health care that we all deserve—because every member of this family has incalculable value. **In 2020, thanks to the generosity and dedication of thousands of supporters, we doubled down.** APLA Health safely expanded the reach and impact of vitally needed programs and services. That growth was informed at every step by a renewed focus on equity, inclusion, and racial justice—both externally for the patients and communities APLA Health serves, and internally for APLA’s staff.

Despite a year of crisis, APLA Health’s vital work—to end the epidemics, to care for our communities, and to build a health care system that works for us—continues. The new skills we’ve learned, the new programs we’ve built, and the critical anti-racism work we’ve begun will persist and continue in the years ahead. 2020 made APLA Health a stronger force for better health outcomes in our community.

A CONCRETE EXPRESSION OF OUR COMMITMENT

We focus specifically on removing the many health disparities that disproportionately affect communities of color, including higher rates of HIV infection and chronic diseases, and LGBTQ+ individuals who may not seek medical care due to the crushing stigma around sexual orientation and gender identity.

Expanding access to top-quality care for LGBTQ+ people in underserved, primarily low-income neighborhoods is something else that just couldn't

location. Subsequently in 2005, we opened the S. Mark Taper Foundation Center offering a wide variety of dental services including regular checkups and cleanings, X-rays, fillings, and more.

The last 19 years of learning, collaboration, partnership, and growth will be manifested in this updated, expanded site in which members of the surrounding community will have local access to all of APLA Health's top-quality services—LGBTQ+ primary medical care, dental care, behavioral health, HIV testing/treatment and PrEP management, and an NOLP food pantry.

The second site is our first-ever Out Here Sexual Health Center located in Baldwin Hills. This state-of-the-art facility is specifically designed for APLA Health's targeted efforts to address the still far-too-high infection rates for HIV and other STDs

in LA County. This new clinic will make critical HIV and STD prevention and treatment services even more accessible by lowering barriers to care with weekend hours, extended weekday hours, drop-in services, and mobile-phone accessibility—it is one more tool the community can use to end the epidemics and live healthier, safer lives.

be put on hold because of the pandemic. While COVID-19 has complicated the work and created some significant delays in 2020, plans are still moving forward for APLA Health to complete construction and open two new, important sites in the first half of 2022.

The first is our newest APLA Health Center, CDU/MLK Medical Campus. Located on the campus of Charles R. Drew University of Medicine and Science, directly across from the Martin Luther King Jr. Community Hospital, this is APLA Health's largest financial investment in a health center facility to date.

APLA Health has been in this part of South Los Angeles serving the needs of the surrounding communities of Watts, Compton, Lynwood and Willowbrook since 2001 with an NOLP food pantry



With these two new sites, APLA Health is again doubling down on our foundational commitment: to ensure access to the highest quality of care for all members of our LGBTQ+ family, especially those who would otherwise go without. Because every single one of us is worth it.

GROWING TO MATCH THE NEED, CHANGING TO KEEP EVERYONE SAFE

One core APLA Health program that could not transition online in the face of COVID-19 was our Vance North Necessities of Life Program. NOLP is the country's largest food pantry network for people living with HIV/AIDS with fourteen locations throughout Los Angeles County—from Long Beach to Lancaster—and has distributed over 16 million free meals to people who live at or below the poverty line.

For APLA Health's clients living with HIV, the food provided by NOLP is absolutely essential—every meal we distribute is expertly engineered by staff dietitians to stave off the deleterious effects of disease and medication alike. And NOLP serves as a critical connection point to other needed services and care for all those who are fed by the program. Stopping, or even pausing, this vital program was again not an option.

APLA Health staff reconfigured food pantry sites and lengthened pickup hours to keep clients socially distant while still delivering needed food. The volunteer-powered infrastructure that keeps NOLP

running in an ordinary year had to be overhauled to work with fewer people. Our warehouse crews got high-efficiency grocery-bagging down to a science.

Just as pandemic-driven job losses pushed greater numbers of people into food-insecurity, NOLP ramped up to meet the need where it was most acute.

Plans drawn up in 2019 with the Los Angeles County Division of HIV & STD Programs funded the expansion of the program to provide 100 percent of a person's recommended daily allowance (RDA). Each week, an NOLP client now receives fresh dairy, frozen meats, fresh produce, and an assortment of canned and dry goods that provide 21 meals a week plus snacks, as well as hygiene items and cleaning supplies.

In addition, NOLP clients continued to receive bilingual, one-on-one nutritional counseling and group nutrition classes via Zoom— at a time when they couldn't have been more important to the health and wellbeing of our community.



APLA HEALTH COMMITTS TO ANTI-RACISM

While we have always worked to provide equitable, culturally competent, and trauma-informed care, the devastating instances of police violence captured on camera and the public's vocal response that shook 2020 drove APLA Health to rededicate ourselves to the cause of racial justice, and to formalize the work of becoming an anti-racist organization in earnest.

That work started with a hard look inward and with centering the voices and experiences of Black staff and leaders within the organization. APLA Health engaged professional diversity, equity, and inclusion consultants—bringing in outside expertise was a critical step to ensure that existing power dynamics and biases within the organization didn't get in the way of the work. Education and listening sessions were convened—with clients and community members, with staff and organization leaders, with board members and donors. We learned a lot from these tough, real conversations—but mainly we learned that there is still a lot more work to do.

Because anti-racism is a practice—not a state you achieve or a box you check off. That's why APLA Health has committed to a multi-year racial justice initiative which will be developed in parallel with and inform every element of the organization's multi-year strategic plan.

Immediate next steps include further efforts to surface and elevate the voices of Black, Indigenous, and People of Color (BIPOC) clients in the neighborhoods we serve to ensure programs are culturally relevant and responsive to community needs. We're also building internal support structures for BIPOC staff and managers at APLA Health to consciously foster growth and create a pipeline of BIPOC leadership. And APLA Health is continuing to strengthen connections and referral networks with BIPOC-led and -centered organizations with the understanding that only together can we holistically address the myriad social determinants of our clients', and our community's, health.



MOVING TOGETHER EVEN WHEN WE'RE APART

Many of APLA Health's programs realized surprising victories in the new, mostly-remote, socially-distant world of 2020. Some of the most impressive, and most unexpected, virtual successes we saw last year were with our growing Behavioral Health programs—and with our flagship annual fundraising event, AIDS Walk Los Angeles.

Counselors and therapists working in APLA Health's Behavioral Health programs were skeptical, at best, of the potential for remote therapy sessions. But when COVID-19 forced us to take all of our Behavioral Health services online, that skepticism quickly gave way to resounding success! Within days of moving to online-only therapy, clients and staff alike were working smoothly with the new systems and technology—and Behavioral Health staff started to see marked improvements in key program metrics and client outcomes. After moving online, clients found it much easier to get to therapy appointments on time (there are never traffic jams on Zoom), and fewer clients were missing appointments. More consistent sessions led to more effective, impactful conversations and care—clients were getting healthier faster.



By pivoting quickly to take Behavioral Health services online, APLA Health was able to keep clients connected to important services—and in many cases deepen those connections. Even with the added stressors that 2020 piled on, our Behavioral Health clients had the support they needed to stay well.



If taking our Behavioral Health services fully online was a challenge, taking AIDS Walk Los Angeles—a 10,000-person, day-long march through downtown Los Angeles—online was a herculean feat. But APLA Health's AIDS Walk supporters were more than a match for this challenge! Thousands of individual walkers and walk teams transformed themselves into virtual AIDS walkers contributing amounts both large and small. **Ultimately, AIDS Walk Los Angeles 2020 surpassed our revenue goals helping to raise critical funds toward APLA Health's efforts to end this epidemic—and, even more importantly, it brought our community together during a year when we were all forced to be apart.**

INNOVATING TO END THE EPIDEMICS WHILE WE ALL STAY AT HOME

The most proven, effective approaches to HIV and STD prevention involve building community—literally bringing people together. In-person meet-ups, testing and treatment, support services, and consistent medical visits help keep people healthy, safe, and in community with one another. Unfortunately, these traditional approaches had to be reinvented on-the-fly as COVID-19 safety protocols changed the way that all of us live, work, and interact.

Downtime was not an option. The stakes of this work are incredibly high for the health of our community—when we lose touch with clients, they lose touch with important prevention services, and infection rates go up. **APLA Health staff immediately pivoted its prevention work to building virtual connections, entry points, and community hubs online to replace the spaces and events that were shuttered by the pandemic.**

Outreach to the community moved online via a new and growing slate of fully produced, prevention-

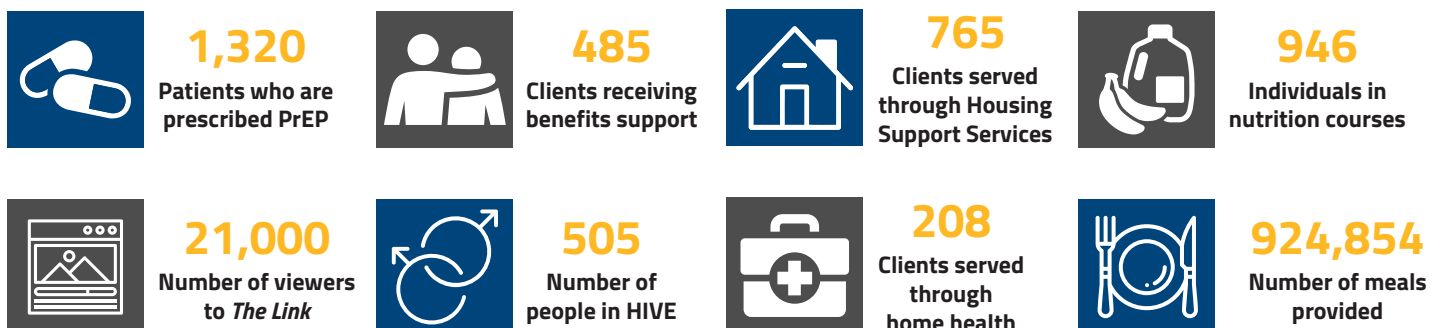
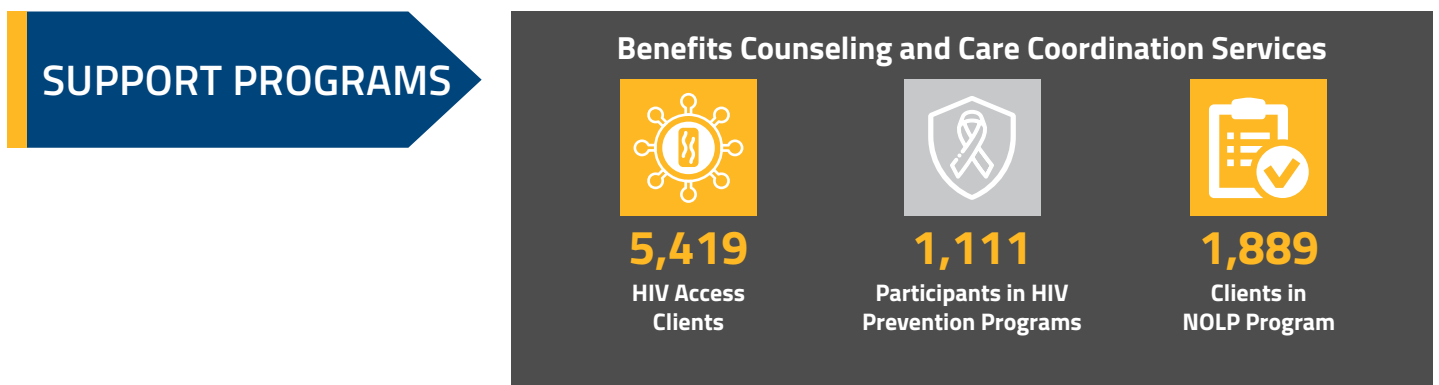
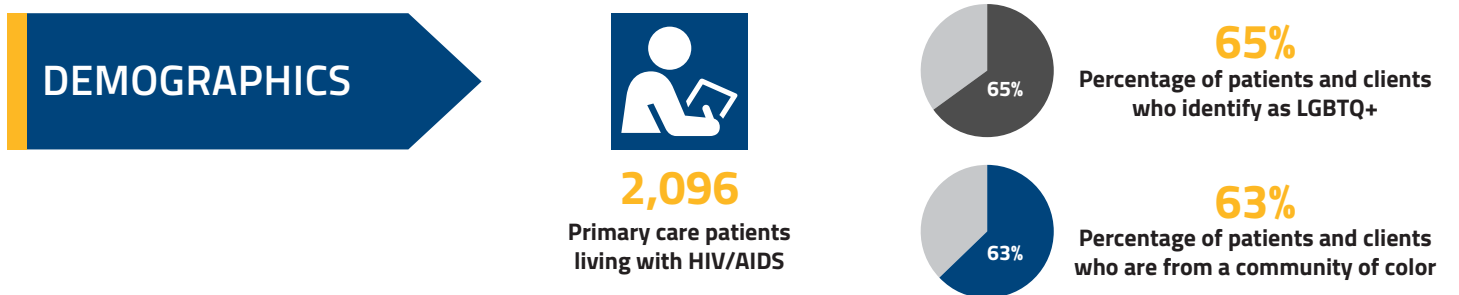
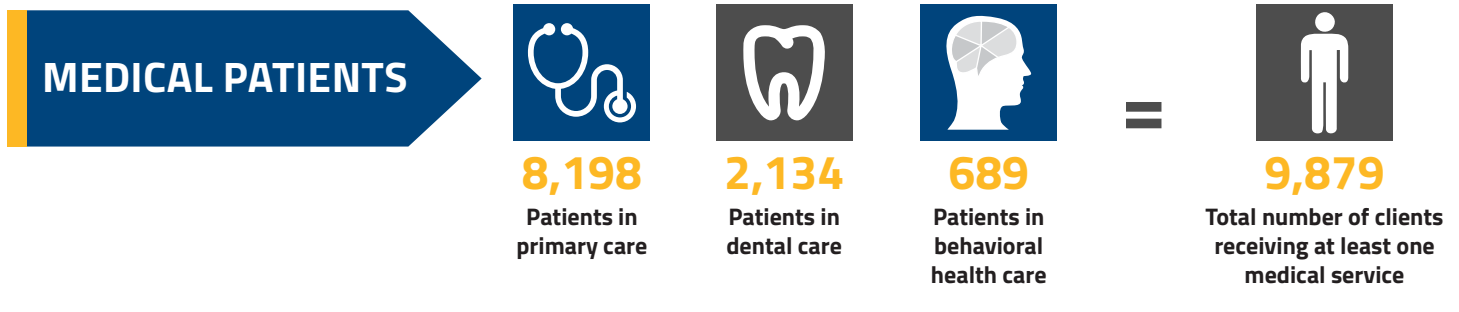
centered video series that targeted niche audiences with the greatest amount of unmet health needs. Client relationships were maintained—and new clients and audiences were reached, informed, and connected to services.

APLA Health backed up virtual outreach with impactful and innovative real world programs. **The new *Swab & Chill* program distributes, and normalizes, rapid, self-administered, at-home HIV tests**—and in fact reaches a lot of people who never would have made it into one of our brick-and-mortar sites for testing. **To ensure undiminished access to PrEP while minimizing the risk of COVID-19 exposure, we trained telehealth *PrEP Navigators* to effectively pre-clear clients online**, dramatically reducing the amount of in-person contact it takes to get someone started on PrEP. While these innovations were born out of crisis, they'll remain important tools for expanding the reach of APLA Health's prevention services long after the threat of COVID-19 has passed.



REASONS TO BELIEVE: APLA HEALTH BY THE NUMBERS

Behind every number below is a story. A story about people who are living longer, healthier lives which are not just extended, but enriched, and about people getting care that they otherwise would have gone without. In short, this is a story about a community taking care of its own.



APLA HEALTH BOARD OF DIRECTORS

Peter Perkowski – Chair

Principal
Perkowski Legal, PC

Lee Klosinski, Ph.D. – Vice Chair

Senior Associate Director
UCLA Nathanson Family Resilience Center

Alan R. Walden – Treasurer

Project Manager
Capital Group

Janice Littlejohn – Secretary

Associate Director
Los Angeles Institute for the Humanities, USC

Eddie Batchelor

Non-Profit Administrator
Robert Half International

Paula Cannon, Ph.D.

Distinguished Professor of Molecular
Microbiology & Immunology
University of Southern California

Tracy Cohen

APLA Health Volunteer

Chad D. Franks

Principal
KPMG LLP

Anthony Henderson

Senior Oncology Specialist
Novartis

Mark Kadzielski

Health Law Partner
BakerHostetler LLP

Jessie L. McGrath

Deputy District Attorney
Los Angeles County

M'Allyssa Mecnas

Associate
Paul Hastings LLP

DJ Moore

Partner
Environment, Land & Resources Department
Latham & Watkins LLP

James M. Patton III

Retired CEO
Integrated Construction Associates

Hector Perez

Director of Pharmacy and Retail Operations/
L.A. Market
Walgreens

Natalie Ramos, M.D., MPH

Assistant Clinical Professor of Psychiatry
UCLA David Geffen School of Medicine

John Sealy, M.D., D.L.F.A.P.A

Assistant Clinical Professor of Psychiatry
David Geffen School of Medicine at UCLA (Ret)

Cody Sisco

Author, Publisher, Organizer
Resonant Earth Publishing,
Book Swell LLC

John Squatrito

Design Director & Manager,
Audience Engagement
ABC7 Los Angeles

Ron Sylvester

President/CEO
RS/tv, Inc.

APLA HEALTH TEAM

Craig E. Thompson
Chief Executive Officer

Robyn Goldman
Chief Operating Officer

Aaron Chawla
Chief Financial Officer

Craig Bowers
Chief Marketing and External Affairs Officer

Jerome de Vente, M.D.
Medical Director

Steven Vitero, DDS
Dental Director

Sean Boileau, Ph.D.
Behavioral Health Services Director

Ken Mintzer
Chief Advancement Officer

Vallerie D. Wagner
Clinic Director, Gleicher/Chen Health Center

Leevi Camus
Clinic Director, Long Beach Health Center

Angelica Barajas
Clinics Director, Dental

Deborah Reiling
Clinic Director, Olympic Health Center

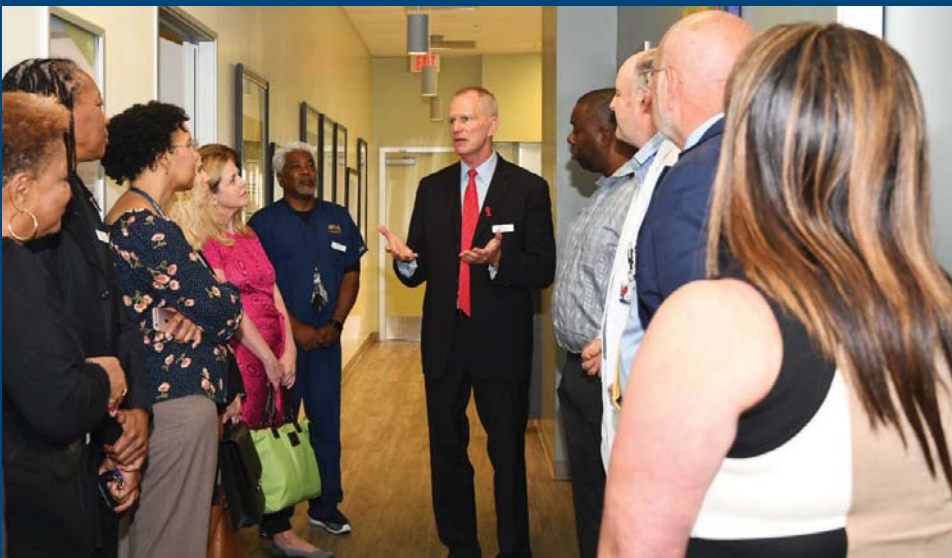
Jeff Bailey
Director of HIV Access and Community-Based Services

Terry Smith
Director of HIV Prevention Services

Phil Curtis
Director of Government Affairs

Madria Marshall
Director of Human Resources

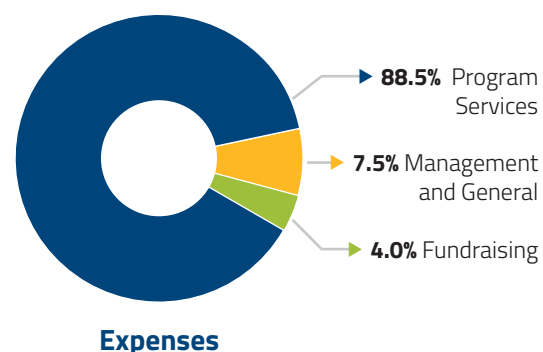
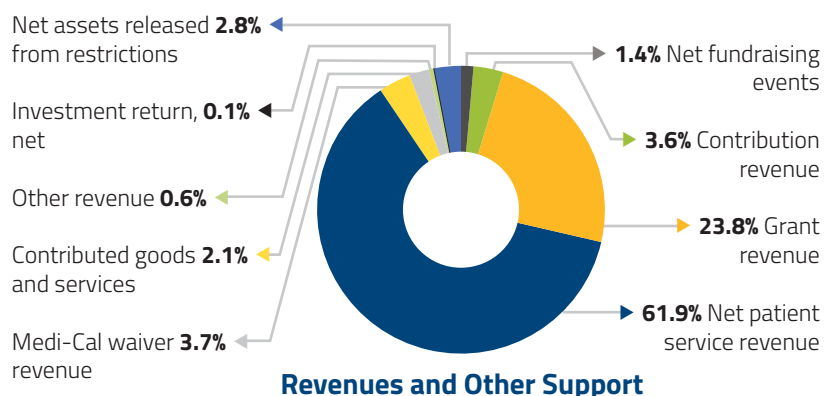
Alex Medina
Director of Communications



APLA Health & Wellness and The Global Forum on MSM & HIV (MSMGF)

Consolidated Statement of Activities
As of June 30, 2020
With Summarized Totals for June 30, 2019

	2020		Total	2019 Total
	Without Donor Restrictions	With Donor Restrictions		
Revenues and Other Support				
Fundraising events	\$1,245,633	\$ -	\$1,245,633	\$1,437,269
Cost of direct donor benefits	(392,107)	-	(392,107)	(441,011)
▶ Net fundraising events	853,526	-	853,526	996,258
▶ Contribution revenue	2,144,263	1,713,528	3,857,791	4,336,726
▶ Grant revenue	14,291,978	-	14,291,978	14,029,514
▶ Net patient service revenue	37,270,259	-	37,270,259	27,971,550
▶ Medi-Cal waiver revenue	2,226,382	-	2,226,382	1,972,490
▶ Contributed goods and services	1,293,096	-	1,293,096	1,549,812
▶ Other revenue	360,466	75,635	436,101	570,619
▶ Investment return, net	87,770	186,107	273,877	285,309
▶ Net assets released from restrictions	1,681,136	(1,681,136)	-	-
Total Revenue and Other Support	\$60,208,876	\$294,134	\$60,503,010	\$51,712,278
Expenses				
Client support	\$6,128,369	\$ -	\$6,128,369	\$5,136,274
Education	5,969,331	-	5,969,331	6,982,991
Clinical services	36,657,099	-	36,657,099	27,071,222
Government affairs	572,326	-	572,326	509,958
▶ Total program services	49,327,125	-	49,327,125	39,700,445
▶ Management and general	4,143,889	-	4,143,889	3,596,882
▶ Fundraising	2,250,026	-	2,250,026	1,834,713
Total Expenses	\$55,721,040	\$ -	\$55,721,040	\$45,132,040
Change in Net Assets	4,487,836	294,134	4,781,970	6,580,238
Net Assets, Beginning of Year	15,736,360	4,721,661	20,458,021	13,877,783
Net Assets, End of Year	\$20,224,196	\$5,015,795	\$25,239,991	\$20,458,021



**APLA Health & Wellness and
The Global Forum on MSM & HIV (MSMGF)**
Consolidated Statement of Financial Position
As of June 30, 2020
With Summarized Totals for June 30, 2019

	2020			2019 Total
	Without Donor Restrictions	With Donor Restrictions	Total	
Assets				
Cash and cash equivalents	\$10,032,284	\$ 940,178	\$10,972,462	\$9,084,699
Investments	507,499	-	507,499	2,379,909
Term endowment	-	2,617,480	2,617,480	2,571,269
Accounts receivable, net	5,906,615	-	5,906,615	3,762,154
Medi-Cal waiver receivable	444,414	-	444,414	416,880
Grants receivable	2,865,700	-	2,865,700	2,180,460
Contributions receivable	155,501	644,050	799,551	1,125,659
Prepaid expenses and other assets Deposits	303,969	-	303,969	343,065
Inventories	7,585,652	695,513	8,281,165	132,504
Split-interest agreements	244,111	-	244,111	201,971
Property and equipment, net	-	14,087	14,087	16,457
Property and equipment, net	3,454,841	104,487	3,559,328	3,433,540
Total Assets	\$31,500,586	\$5,015,795	\$36,516,381	\$25,648,567
Liabilities and Net Assets				
Current Liabilities:				
Accounts payable	\$ 3,001,333	\$ -	\$3,001,333	\$2,331,762
Accrued expenses	2,087,989	-	2,087,989	1,479,316
Deferred revenue	1,327,578	-	1,327,578	969,978
Notes payable	4,859,490	-	4,859,490	409,490
Total Liabilities	11,276,390	-	11,276,390	5,190,546
Net Assets:				
Without donor restrictions				
Undesignated	13,350,404	-	13,350,404	11,339,458
Board designated	6,873,792	-	6,873,792	4,396,902
With donor restrictions	-	5,015,795	5,015,795	4,721,661
Total Net Assets	20,224,196	5,015,795	25,239,991	20,458,021
Total Liabilities and Net Assets	\$31,500,586	\$5,015,795	\$36,516,381	\$25,648,567

Audited consolidated statement of financial position of APLA Health & Wellness and The Global Forum on MSM & HIV (MPact) [June 30, 2020]

APLA Health is a careful steward of the gifts entrusted to us. We spend wisely to maximize our community impact, minimize overhead, and prepare for the future and the needs of those we service. We are grateful for your generosity.

For a complete copy of our financial positions, audited by BKD, LLP, please visit aplahealth.org.

THE WORLD HAS NEVER NEEDED US MORE

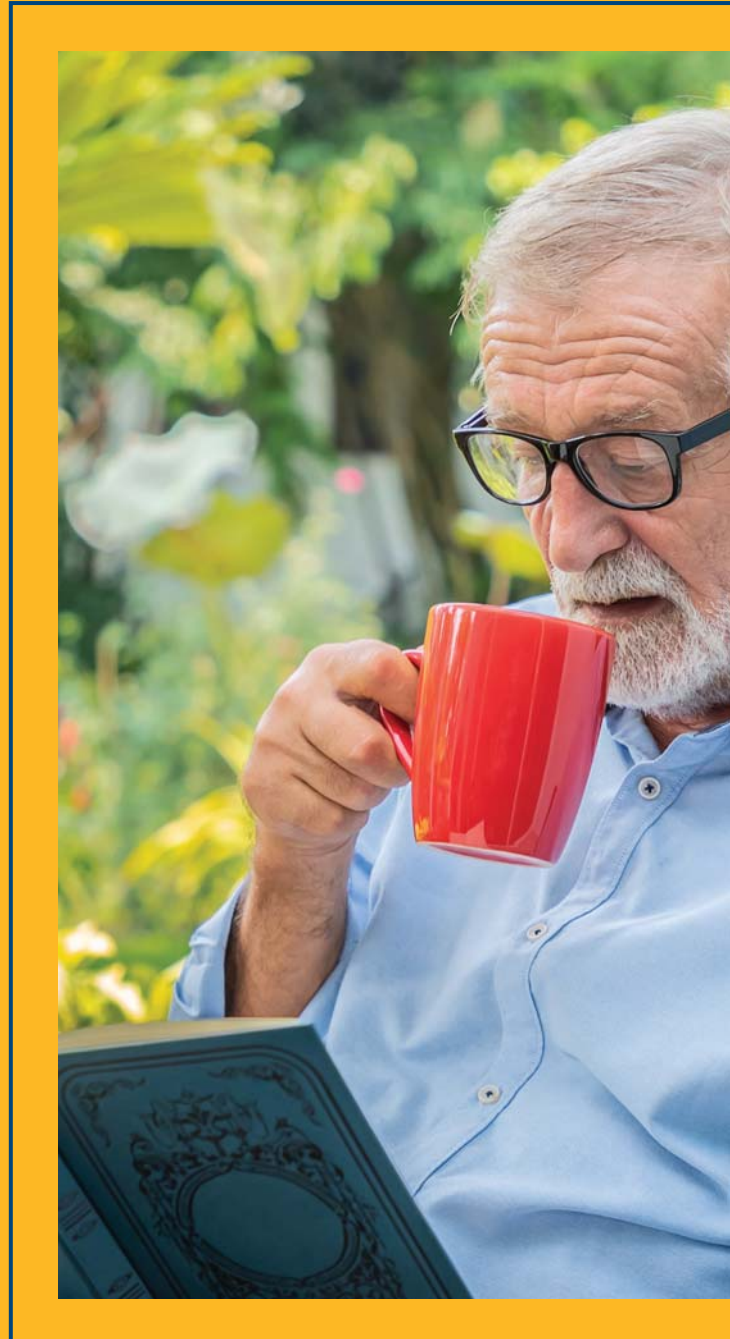
HELP SUPPORT THE CRITICAL WORK WE DO WITH A TAX-SMART GIFT FROM YOUR IRA

Did you know that you'll owe income tax on money in your traditional IRA? You can avoid those taxes completely if you make a gift to APLA Health from your IRA either through your estate or, if you are over age 70½, during your lifetime.

If you are over age 70½, a contribution to APLA Health from your IRA can satisfy your required minimum distribution without increasing your income taxes. The Qualified Charitable Distribution is a tax-reducing and tax-free way to support compassionate and quality care for thousands of people in need.

You have important priorities for your family and loved ones, and we know that they come first. When you are ready, we will be here to help you shape a charitable gift plan that suits your needs and allows you to keep helping our important work.

Reach out to learn more about leaving a charitable gift to APLA Health: **Ken Mintzer, Chief Advancement Officer, 213.201.1525, kmintzer@apla.org**



BEQUEST (WILL OR LIVING TRUST) | BENEFICIARY DESIGNATION (LIFE INSURANCE OR IRA)
CHARITABLE REMAINDER TRUST | CHARITABLE LEAD TRUST | RETAINED LIFE ESTATE



FOUNDATION AND CORPORATE SUPPORT

\$100,000 and up

Cedars-Sinai Medical Center
W. M. Keck Foundation
L.A. Care
ViiV Healthcare

\$10,000 - \$99,999

Broadway Cares/Equity Fights AIDS
California Community Foundation
Capital Group
The Johnny Carson Foundation
Delta Dental
Direct Relief
The David Geffen Foundation
Kaiser Permanente
M·A·C VIVA GLAM Fund
The Roger I. and Ruth B. MacFarlane Foundation
Northrop Grumman Systems Corp
Oaktree Capital Management
Joan Shafran & Rob Haimes Foundation
Wells Fargo

\$9,999 and under

Amgen
Anonymous
Home Box Office
Lon V. Smith Foundation
Northrop Grumman ECHO
The Louis and Harold Price Foundation
Sony Pictures Entertainment
US Bank National Association

AIDS WALK LOS ANGELES 2020 SPONSORS

PREMIER SPONSORS

\$100,000

Gilead Sciences
Paul Hastings

GRAND SPONSORS

\$50,000

ABC7
Delta Air Lines
L.A. Care
Latham & Watkins LLP
Paramount Pictures
ViiV Healthcare

PRINCIPAL SPONSORS

\$25,000

Albertsons, Vons & Pavilions
Capital Group
Oaktree Capital Management
Quest Diagnostics
Wells Fargo

MAJOR SPONSORS

\$15,000

Anthem Blue Cross
Baldwin Hills Investors, Ltd.
Macy's
Northrop Grumman Systems Corp
Premier Pharmacy
Sprouts Farmers Market
Walgreens

EVENT SPONSORS

\$5,000

Amgen
The Dietz Agency Insurance Services
Hathaway Dinwiddie Construction Company
IMAX Corporation
Keck Medicine of USC
Klawiter & Associates
McDermott Will & Emery
Olympia Plaza Pharmacy
Optum Specialty Pharmacy
Patterson Dental
SecureNet Solutions, Inc
Starbucks
Target Corporation

CO-CHAIR SUPPORTERS

BKD CPA's & Advisors
The Arthur J. Gallagher Foundation
Gelfand, Rennert & Feldman LLC
Gelson's Markets
Morgan Stanley Wealth Management



AIDS WALK LOS ANGELES 2020 STAR WALKERS

PLATINUM STAR WALKERS \$10,000+

Bert, Juliet, Danica, and Ari Champagne-Moffett
Gina Lozano
DJ Moore
John Squatritto III & John Mullican
Starbucks Area 136

GOLD STAR WALKERS \$2,500 - \$9,999

Richard Ayoub*	Tyler Hynes
Michael Barrett	Jeffery Nunes
Steven Brady	Mike Osborne
Robin Bram*	Jessica Pennington Quinn
Brenda Burgueno	Lois Perilman
Kendra Castleberry	Dr. John Sealy
Zachary Cook	Kate Shapiro
Dr. Jason Cupp*	Susan Simons
Jessica Drake & Brad Armstrong	Nick Solis
Tom Fay	Charles Solomon
Sasha Giesberg	Julian Torres-Bravo
Robyn Goldman	Erica Velador
Lawrence Herrera	April Yamamoto
Gina Hurstak	Frank Yamrus

STAR WALKERS \$1,000 - \$2,499

Robert Alschuler & Meryl Wecksler	Donny Fan	Janet Llewellyn	Annamarie Pineda
Deborah Beard & Kyle Hayden	Richard Garcia	Tahlia Margulies	Danielle Ramos
Sunnie Rose Berger*	Cal Glickman	Doris Martinez	Kate Redinger
Kathleen Bloome	Paige Glover	Robert Maullon	Janessa Regan
Emma Blyth	Gail Goldberg	Erika McCarden	Tasha Reign
Dr. Sean Boileau	Bahar Golmohammadi	Ross Meredith*	Eric Romero
Jeffrey Bonforte	Rachel Griffin	Virginia Miller	Lee Rosenthal
Lindsay Carney	Tonya Hendricks	Jeannie Moreno	Summer Ruyle
Marilyn Chavez	Libby Higgins	Tiff Mulligan	Karl Schmid
David Christian	Joshua Hill	Sarah Murray	Lola Shahdadi
Tracy Cohen & William Ludel	Andrew Holinsky	Dr. Matt Mutchler	Brian Sharp
Keith Crasnick & Judith Tishkoff	Sarah Holman	Robin Nicholas	Terry Smith
Nichole Delansky	Brett Holzgen	Nancy Nyberg & Dean Cleverdon	Isaac Soren
Raif Derrazi	Ryan Hope	Wendy Ordower	Billy Stoddard
Vincent Doraz	Gaynell Jackson	Scorpio Pecorino	Lila Sugerman
Charles Downs	Tom Kaiser	Holly Perdue	Craig E. Thompson & Walter Lowry
Margaret Lorrie Drenk	William Kelsey & DJ James	Elisa Perez-Selsky	Lauren Tom*
Loretta Eason	Andy Kraut	Peter Perkowski	Anthony Valdez
Erin Engman	Mona Lee	Catlin Perrin	Cris Villorante
Marcus Fabro	Carron Leon	Penny Peyser & Douglas McIntyre	Ryan Wooten
	Janelle L'Heureux		
	Janice Littlejohn		

*Star Walkers who raised \$1,000 or more on behalf of other HIV/AIDS service organizations in Los Angeles County

2020 Star Teams

Star Teams raised \$10,000 or more during AIDS Walk Los Angeles on behalf of APLA Health.

Starbucks CARES
APLA Health
MAC Cosmetics
Latham & Watkins LLP
ABC7 – Disney PRIDE
Kids Who Care Coalition – Oakwood School
Milken Kids Who Care
Crown Media – Hallmark Channel
Grindr
Anthem Blue Cross
TEAM WICKED

LEADERSHIP CIRCLE

The Leadership Circle is a special group of dedicated philanthropic individuals and families who contribute to the Annual Fund (non-event related giving) at levels of \$1,200 or more. Members enjoy an array of benefits and special recognition. Gifts and pledges were received in 2020.

BENEFACTORS \$25,000+

The Johnny Carson Foundation
The Roger I. and Ruth B. MacFarlane Foundation
Richter Farms

PATRONS \$10,000 - \$24,999

Anonymous	Peter Johnson
Cameron Diaz	Douglas Levi
Howard Gleicher & Damon Chen	Reba Merrill
Rodney Gould	Jonathan Murray & Harvey Reese
Richard Habic & Mildred Naatz	Peter Nowalk
David Hockney	Trammell Whitfield

CHAMPIONS \$5,000 - \$9,999

Robert Alschuler & Meryl Weckler	Mark Kadzielski
Anonymous	James Klawiter
Tracy Cohen & William Ludel	Room & Board
David Dyck	Charles and Jackie Schwartz
Stephen and Lana Fitzpatrick	Dr. John Sealy
Wayne Flick & William Hynes	Cody Sisco & Jay Fennelly
Deborah and Robert Hinderliter	Harriet Zaretsky
Leslie Joseph	

ADVOCATES \$2,500 - \$4,999

William Bergens	James McNamara & Franco Laguna
Stephanie Buonopane	Brad Miyasato & Brad Duerre
Alexandra Burke	Edward Myers
Sona Chandwani	Open Road Entertainment
Kenneth Chiampou	Mark Perrin
Dan Clivner	Dean Pitchford & Michael Mealiffe
Beth and Dr. Neal Cutler	Fred Porter
The Edlow Family	Jonathan Reeves
Harold and Marjorie Forshey	Gregory Ritmire
Diane Garlock	The Herb Ritts Jr. Foundation
Henry Hurd	Edward Ruscha
Ramy Katrib	James Ryan
Joseph Kotzin	Fred Siegel Foundation
Henry and Paula Lederman	Donna and Gregory Spears
Los Angeles Charitable Association	Craig E. Thompson & Walter Lowry
Vinicius Losacco	Peter Tuczynski
Roger and Ruth MacFarlane	

PARTNERS \$1,200 - \$2,499

Wade Ackerman
Robert N. Alfandre Foundation
Grace Anderson
Pamela Andrada
Anonymous
John Anthony
Larry Asher III
Daniel and Carol Benson
Steven and Sandra Berenter
Aviva Bergman
Pamela Bieber
Toby Bloom
Lewis and Barbara Blynn
Craig Bowers
Jay Brecker & Eileen Cowin
Lloyd Brewer
Dr. Dale Buchanan
Mark Burley
Andrew Campbell
Dr. Paula Cannon
Joanna Carson
Richard Cassese
Daniel Castellaneta & Deborah Lacusta
Catherine Christensen
Richard Chung
Michael Cravotta
Dr. Eric Daar
Drs. Hanna and Antonio Damasio
Dr. Jerome de Vente
Bill D'Elia
Steven Diener
Margaret Lorrie Drenk
Bob Ducsay
Robin Dumas
Alison and Peter Eichberg
Lawrence Eisenberg
Doris Elam
Aaron and Anne Epstein
Anita Espinoza
Alan Ewalt
Cameron and Brien Fox
Chad Franks
Brenda and Thomas Freiberg
Robert Galishoff
Eric Geiger & Dr. Jay Gladstein
Peter Georgianni Jr.

Raymond Goetz
Robyn Goldman
Dr. Irwin and Sally Goldstein
Herbert Gore
Peter Gould
Eliot Graham & John Celowanchik
Fidelia Gutierrez
Jennifer Hadley
Kevin Hamilton & Michael Gapinski
Anthony Hankins
James Hasenauer
Gene Hawkins
Allan Heinberg
David Hinton & Ramon Campos
Keith Hoshal & Hector Gomez Vasquez
The Hyman Levine Family Foundation
Betsee Isenberg
Gregory Jennings
Neil Johnson
Lisa and Michael Josephson
Jason Kennedy
Kevin Kershnik & Rory Sheehan
Arnold and Caroline Kleiner
Dick Kleppe
Lee Klosinski & David Cohen
Deborah and Phillip Koeffler
Laura and Leigh Landau
Linda Lasley
Lawrence Legg
Simon and Theresa June Li
Marion Liberotti
Jules Litwak
Richard Lodge
Francis Lorah
Terrence Lynch & Jim Martin
Arthur MacBeth
Thierry Marchand
Dr. Clark Martin
Jacquelyn Mason
Jessie McGrath
Scott McPhee
Mary Medley
Carolyn Metcalf
Jeffrey and Marla Michaels
Leo Mingle Jr.
Moises Miranda

Stephen Moore
Douglas Moreland
Paul Mueller Jr.
Dr. Paul Nash
John Oden & Dr. Mark Dizik
Judith O'Hara
Carolyn Oill
Donna Owen
James Parriott III & Diane Cary
Peter Perkowski
Eric Persing & Lorey Calvert Persing
Mike Potter
Bob Rademacher & Paul Pappajohn
Weslie Rau & Dennis Snapp
Betty-Jo and Dr. Abe Ravitz
Thomas Reichert
Charles Robbins & Damon Romine
Jarrow Rogovin
Marvin Rolnick
Mark Romano
Steven Ruiz
Bruce Schuett
Susan Schulman
Michael and Kathy Scroggie
Dr. Mark and Elizabeth Sharzer
Glenn Smith
Mikel Snow & Eileen Smith
Lynne Steele
Ron Sylvester
Eliazar Talamantez
Daniel Taylor
John Teeples
Cliff Teston III
Paul Thompson & Patrick Doonan
Greg Tirabasso & Joseph Krause
Loren Tripp
Ron Valdez & Steven Sawh
Anahi van Zandweghe
Brenda Veney
Bonnie Vitti
Alan Walden
Bernard Weinberg Foundation
Paul Wieseppape
Shannon Wilson
Kathleen Wong
Victor Zolfo

HEARTBEAT MONTHLY GIVING CIRCLE

Heartbeat members make sustained gifts to APLA Health each month. Their dedication is the heart and soul of APLA Health's Annual Fund.

Olga Alarid
Maria Alcalá
Jorge Alcazar
Michelle Alexander
Alberta Altman
Gary Altmanshofer
Erik and Patricia Andersen
Anonymous
Cassandra Arellano
Larry Asher III
Jennifer Attanasio
Marcia Bauchman
William Beach
Anne Beaty
Scott Blackburn
Louise Bockall
Charles Bowers
Craig Bowers
Robert Bracken
Brent and Linda Bradley
Dora Bran
Jay Brecker & Eileen Cowin
Matthew Brigham
Stephen and Heidi Brodeur
Charles Brogdon
Dr. John Brookie
Margaret Bryant
Andrew Campbell
Scott Campbell
Steven Cannell & John Colicelli

Dr. Paula Cannon
Ava Carberry
Carlos Carranza
Nejat Causey Savas
Manuel Chavez & Maria Aguillon Chavez
Catherine Christensen
Richard Chung
Gregory Cohen
Carol Comparisi
Kirt Conn
Antonio Cordova
Dewayne Crabtree
Marisa Cuellar
Dr. Eric Daar
Sara Jane Davis
James Davison
Aileen De Borondy
Cesar De La Cuesta
Dr. Jerome de Vente
Don Dearborn
Stephen Donnenfield
Dave Doody
Bob Ducsay
Robin Dumas
Leonard Duran
James Dusek
William Edmonson
Bert Elie Jr.
Conlette Elishaw
Joe Emory

Tom Fay
Toby Flores
Charlotte Frazer
Brenda and Thomas Freiberg
Yvonne Gandara
Joshua Gartin
Dr. William Gaskill
Eric Geiger & Dr. Jay Gladstein
Allen Glander
Kelby Gleghorn
Peter Gould
Robert Gounley & Paula Delfosse
Brett Gourley
Albert Gratti
Daniel Guggenheim
James Gunther
Jeffrey Hall
Susan Hall-Marley
Eric Halm
Cody Hamilton
Walter Harris Jr.
Robert Hatch
Allan Heinberg
William Hemmer
Edyth Henrickson
Dr. Telaireus Herrin
Jami Higginbotham
Gail Hill
Gregory Hines
Vernethe Hines





David Hinton & Ramon Campos
 Howard Hochberg
 Henry Hurd
 Elliot Hutkin
 Stephen Iglehart
 George Izaguirre
 Tony Jackson
 Richard Jeffery
 Rosemary and Willie Jenkins
 Susan Jerram
 Judy Kaufman
 Dana Kent
 Agnetha Key Quartey
 Joan Kritzberg
 Joshua Kurpies
 Joseph Lamarr
 Gary Lamberson
 Linda Lasley
 Henry and Paula Lederman
 James and Dawn Lee
 Mark Lee
 Dean Lichter
 Candace Lira
 Jeanette Lisak-Phillips
 Janice Littlejohn
 Eileen Logan
 Gloria Lowe
 Robert Lucchesi
 Carolyn Luckenbach
 Kevin Ma
 Molly Malloy
 Dr. Clark Martin
 Marianne Martin & Dale Renke
 Luis Martinez Muñoz
 Michelle McCamish
 Catherine McCarty-Procopio
 Rebecca McCauley
 Shaun McGovern
 Jessie McGrath
 Frank Meister
 Sammy Mershon Jr.

Joseph Miller
 Dianne Mindlin
 Moises Miranda
 Cornelius Mitchell
 Michael and Ida Montelongo
 Andrew Moreno
 Mark Neiman
 Maria Newson
 Alicia Nibler
 Carolyn Oill
 Susan Olson
 Donna Owen
 Gregg Padovan
 Robert Peltzman
 Luis Pereira
 Elisa Perez-Selsky
 Ricardo Perez-Selsky
 Peter Perkowski
 Eric Persing & Lorey Calvert Persing
 Michael Pitts
 Renee Portenier
 Sharon Powers
 Ramon and Margaret Prado
 Christopher Ragsdale
 Joe Ramirez & Vergel Bozarth
 Tracey Reed
 Maria Rivera-Duncan
 Charles Robbins & Damon Romine
 Jacquelyn Roberto-Cinque
 Adrian and Gisela Robles
 Jennifer Rocha
 Estelle Rodkoff
 Joey Rodriguez
 Jack and Christine Rose
 Toni Counts Rose
 Howard and Connie Rosen
 Brian Roskam & Michael Werb
 Bertha Ross
 Richard Ross
 Ana Rubio
 Judith Sanders

Dennis and Abigail Santiago
 Sheila Saunders
 Jefferson and Patricia Schaefer
 Terry and Donald Seddon
 Elizabeth Sevilla
 Mark and Margot Shafron
 Lori Shannon Amely
 Cynthia Sheppard-Wilson
 Dr. Anne Shull
 Russell Siner
 Leonard and Judy Soloff
 John Spilker
 Donald Spivack
 Dr. George Splane
 Merrilee St. John
 Kenneth Stewart
 David Stoebner
 Francia Summers
 Lee Sweet
 Ron Sylvester
 Paula Tait Fay
 Cliff Teston III
 Paul Thompson & Patrick Doonan
 Janet Clement Touns
 Margaret Turley
 Ron Valdez & Steven Sawh
 Anahi van Zandweghe
 Kenneth Wagar
 Irene Walzer
 Aaron Watson
 Gila Wdowinski
 Barry Weiss
 Trammell Whitfield
 Michael and Edra Widener
 Diane Williams
 Gernot Wolfgang
 David Woodard
 Fern Yee
 Victor Zolfo
 Elliot Zwiebach

LEGACY SOCIETY

Planned giving is the blending of philanthropy and sound financial planning. By making a bequest to APLA Health through a will or trust, naming APLA Health as a beneficiary of a life insurance policy or retirement plan, or creating a life income plan through APLA Health, these donors are forging a lasting legacy that benefits their loved ones and those who depend on APLA Health for services.

MEMBERS

Michael Becker
Malcolm Blue
Kathy Bouchard
Jerry Dealey
Mike Dorrington
Inger Godley
Rodney Gould
Margaret Guerra
Loc Nhu Hoang & James Siler
Richard Jeffery
Jeff Jenest & Robert Colangelo

Martin Kane
Scott Linn
Robert Loving
Arthur MacBeth
Victor Manzella
Diane McCarry
Carol Meckler
Michael Mullen & Barry Johnson
Barth Norton
Patrick O'Brien
John Oden & Dr. Mark Dizik

Suzanne Rosentswieg
Donna and Gregory Spears
John Spence
Alan Swartz
Ron Sylvester
Craig E. Thompson & Walter Lowry
Rene Valtier
Lee Wallace
Irene Walzer
Michael Ward
Danielle Wolff

IN MEMORIAM

Lurene Albert
Walter Alford
Helen Austin
John Auzin
John Babington
Dorothy Bailey
Emory Bass Jr.
George Beal
John Bell
Juan Benitez-Vargas
Gerald Bergeron
John Bicket
James Bidwell
Dr. Joseph Block
Abraham and Helen Bolsky
Hanna Bopp
Fred Borenstein
Charles Bowden
Howard Bresner
Ralph Brewer
Craig Broek
Roy Brown
Nina Byers
Terrence Byrne
Andrea Carter
Louis Cataffo
Frederic Chace
David Chierichetti
Robert Clapper
Eunice Cleff
Ronald Clement
Stanley Cohen
Cohen/Wright Trust
Walter Conley

Donald Cook
Sarah Crampton
Lillian Crews
J. R. Danielson
Phillip Dennis
Theodore Divine
Mark Donahue
Donald Douglas
William Downey Jr.
Blanche Drettler
Daniel Duesler
Sadie Dullman
Pauline Eisenberg
David Ellis
Ruth Emory
Vern Eveland
Walter Febick
Richard Feldman
Jack Fields
Bruce Fiigen
Louis Fink
John Finnesey
Gregory Fisher
Mindelle Fisher
Aida Foti
Harold Freudenheim
John Gaines
Gilbert Ganz
Oliver Garver
Peter Geissler
Leonard Gerson
Richard Giannini
Dwight Gibson
Edward Gould

Robert Gould
David Graham
John Graham
Barbara Grant
Robert Green
Melba Gregory
Richard Gross
Rose Mary Gunn
Philip Gunnison
Robert Halfff
Stephen Hare
Leo Harman
Michael Hawkins
Robert Hawkins
Norman Hawkins
Charles Heaton
Stanley Hebel
James Heider
Kenneth Heisterman
Harold Helse
Christopher Herman
Evelyn Hirsch
Ernest Hirsh
Dr. Elliott Hochman
George Hodgins
Roswell and Elizabeth Hoffman
Richard Hornung
Aaron Howard
Gerard Hunt
Leslie Hunter
Gary Hutton
Sidney Jacobson
Louis and Jane Jacobson
C. Robert Jennings

Arthur John
 Alan Scott Johnson
 Kurt Johnson
 W. Conley Johnson
 Jimmy Jones
 Gary Kalkin
 Robert Keagy
 Kenneth Kee
 Frank Ker
 Addison Kerr
 Frances Kirkland
 Stephen Korbel
 Gregory Koset
 Hank Kovell
 Kurt Kreuger
 Alfred and Marion Kronfeld
 Nicholas Labedz
 Lewis Lackie
 Jack Lance
 Ray Landreth
 Michael Lannan
 Robert Lanphear
 Anthony Lau
 Dean Laubenheimer
 G. Lazoraitist
 Dorsey Leard
 Al and Mary Leavitt
 Anne Lederer
 Deborah Leschin
 Albert Levinson
 Sheila Levinson
 Ray Lewis
 Thomas Liberato
 Helen Lipman
 Juan Lopez
 Arthur Mancin
 Richard Mandell
 Gene Marceau
 Kenneth Martin
 David Mason
 Alan Matays
 Thomas Mathie
 Ralph Matthews
 Edward Mausser
 Barney Max
 Robert McClone
 Thomas McCutcheon
 Philip McDonald
 Thomas McDustrell
 Frank McGuire
 Patrick McHugh
 Richard McNamara
 Robert McQueen
 Martin Mendel
 Betty Merfeld
 Joan Midwinter
 Michael Miller
 Robert and Minna Mitchell
 Michael Monahan
 David Morse
 Donald Moseley
 Leslie Mullins
 William Nagle
 Robert Nathan
 Tom Nelligan
 Bertha Nepove
 William Nicholas
 James Niver
 John Noel
 Albert Normandin
 Robert North
 Brian O'Dowd
 Rich Oechsler
 Don Olivier
 Sean O'Reilly
 Robert Parker
 Robert Paston
 Spero Pastos
 William Paxton
 Faye Peluso
 Leonard Peterson
 Richard Pfefferman
 Joseph Pino
 Robert Pleines
 Grace Pobirs
 Terry Jo Pobirs
 Robert Prest
 Miriam Rand
 Javier Rea
 Matt Redman
 Nathaniel Reed
 Marc Reilly
 W. J. Richardson
 Florence Robbins
 Mildred Rodstrom
 D. Scott Rogo
 David Roller
 Greta Rosenblum
 Marvin Rothenberg
 Henry Rottman
 Michael Ryan
 Doreen Rypinski
 Donald Sadler
 Carl and Josephine Sanden
 Marjorie Sanders
 Anthony Sands
 Nancy Cole Sawaya
 Katharine Scallan
 Natalie Schafer
 Henry Schaumberg
 L. Franc Scheuer
 Donald Selten
 Robert Shea
 M. W. Shephard
 Bernard Smolens
 Margaret Sommer
 Alvin Sommerville
 Sousa Family
 Angela Sovilla
 Manuel Spern
 Floyd Stancliff & Frank Holichek
 Sidney Stern
 Daniel Stratford
 Gordon Strube
 Ken Stump
 Sylvia Sugar
 Diane Sullivan
 Lee Sylvester
 Brian Taggart
 Paul Talmot
 Shinichi Tanaka
 Peter Tarup
 Robert Tashjian
 Jeanne Thomey
 Deborah Thompson
 Peter Thorslev Jr.
 Maurice Thurman
 Marie Traxler Kistler
 Edward Troth
 Alphonso Vallejo
 Frederick Voyles
 Paul Waigner
 Donald Watson
 Dorothy Joan Watson
 Kevin Watson
 James Weaver
 Danny Webster
 Alvin Weiss
 Martel Weitzman
 Dorothy White
 William Wilkins
 James Williams
 Eugenia Yesthal
 Clyde Young
 James Zelinger

BENEFACTORS SOCIETY

The Beneficence Society recognizes donors whose many years of cumulative giving have made a lasting, profound difference in the lives of those served by APLA Health.

BENEFACTORS \$1 million - \$4.9 million

Anonymous	The Marilyn and Jeffrey Katzenberg Foundation	QueensCare
Barry Diller	M·A·C VIVA GLAM Fund	United Way of Greater Los Angeles
The Bill and Melinda Gates Foundation	NBCUniversal	Wells Fargo
The David Geffen Foundation	The O.N.N.E. Corporation	
Gilead Sciences		

SUSTAINERS \$500,000 - \$999,999

The Ahmanson Foundation	Hilton Worldwide	S. Mark Taper Foundation
Blok Charity Auto Clearance	The Lincy Foundation	Time Warner
Community Health Charities	Los Angeles County	ViiV Healthcare
The Elizabeth Taylor AIDS Foundation	Macy's	Walt Disney Company
Elton John AIDS Foundation	Merck	Weingart Foundation
Howard Gleicher & Damon Chen	The Ralph M. Parsons Foundation	Ruth/Allen Ziegler Foundation

PATRONS \$100,000 - \$499,999

Abbott Laboratories	Brotman Foundation	Michael and Jane Eisner
AIDS Healthcare Foundation	Ron Burkle	Entertainment Industry Foundation
Timothy Aldrete	California Community Foundation	Fashion Misc.
Allen & Company	The California Endowment	Wayne Flick & William Hynes
Herb Alpert Foundation	The California Wellness Foundation	Fox Entertainment Group
Robert Alschuler & Meryl Weckler	The Calvin Klein Foundation	Dr. Stephen Gabin
Altria Group	Capital Group	Gap Employees
American Express Foundation	Capitol EMI Records	Kevin Garrity
American Foundation for AIDS Research	The Johnny Carson Foundation	Mark Glabman
Amgen Employees	CBS	GlaxoSmithKline
Anheuser-Busch	Cedars-Sinai Medical Center	Rodney Gould
The Annenberg Foundation	Century City Hospital	Astrid Lowery Grohmann
Anonymous	Children Affected by AIDS Foundation	Guess Foundation
Anthem Blue Cross	Clear Channel Communications	Tom Hanks & Rita Wilson
James Arnone	Dan Clivner	The Hearst Foundation
The B.C. McCabe Foundation	Richard Cohen	HIVOS
Baldwin Hills Investors, Ltd.	Jack Corwin	Tom Hogg III
Bank of America Employees	Creative Artists Agency	Home Box Office
Robert Bardavid	John Dalesio	Hughes Employees
Benevity Community Impact Fund	Barbara and Marvin Davis	Harold Huttas
Paul Bloch	Chaz Dean	Infinity Broadcasting
Bloom Hergott Diemer Rosenthal	Delta Air Lines	International Creative Management
Blue Cross of California	Design Alliance to Combat AIDS	Interscope Records
Robert Boyett	Cameron Diaz	James Irvine Foundation
Bridges/Larson Foundation	William B. Dietrich Foundation	David Henry Jacobs
Bristol-Myers Squibb	DreamWorks Animation	Janssen Scientific Affairs
Broadway Cares/Equity Fights AIDS	Dupont Pharmaceuticals	Jeff Jenest & Robert Colangelo



Magic Johnson Foundation
 Leslie Joseph
 Kaiser Permanente
 Karen Kane
 W. M. Keck Foundation
 Barton Kogan
 Dr. Peter Kraus
 L.A. Care
 Latham & Watkins LLP
 Lyn and Norman Lear
 Liberty Media
 William Lynch
 The Mackintosh Foundation
 Lefky Mansi
 Mattel Children's Foundation
 Ron Meyer
 Microsoft Employees
 Midway Hospital Medical Center
 Milken Family Foundations
 Jerome and Ann Moss
 MTV Networks
 James Murphy
 Jonathan Murray & Harvey Reese
 Neiman Marcus
 Neo Nero
 Nordstrom

Northrop Grumman ECHO
 Northrop Grumman Employees
 Open Society Institute
 Don and Bess Owens
 Pacific Oaks Medical Group
 Skip Paul
 A. Jerrold Perenchio
 Pauley Perrette
 Pfizer
 Platinum by Dorothy Schoelen
 The Polo Ralph Lauren Foundation
 Polygram
 The Louis and Harold Price Foundation
 Quest Diagnostics
 Revlon
 Richter Farms
 Riteway Car Donations
 SBE Entertainment Group
 The Seagram Company
 Robert Sertner
 Joan Shafran & Rob Haimes Foundation
 Sidney and Lorraine Sheinberg
 Showtime Networks
 Sony Music Entertainment
 Sony Pictures Entertainment
 Sotheby's

Fran and Ray Stark Foundation
 Michael Strand
 Sunrider International
 Paul Swerdlove & Elgart Aster
 Target Corporation
 Craig E. Thompson & Walter Lowry
 Ticketmaster
 Steve Tisch
 Tisch Foundation
 Toyota Motor Sales USA
 Transamerica
 Turner Entertainment
 UniHealth Foundation
 Union Pacific
 United Talent Agency
 Viacom International
 Walgreens
 Wesley Walraven
 Walt Disney Company Employees
 Wasserman Foundation
 Wells Fargo Employees
 Kevin Wendle Foundation
 Trammell Whitfield
 William Morris Agency
 Zenith Insurance Company

GUARDIAN SOCIETY

The Guardian Society recognizes and honors APLA Health's most crucial donors: those who consistently give year after year.

VISIONARIES – 20+ consecutive years

Eric Abbiss
Charles Adelman
Olga Alarid
Yves Albiez & Charles Earriff Johnson
Zelda and Reuben Allen
Allstate Insurance Employees
Paul and Geraldine Alpert
Robert Alschuler & Meryl Wecksler
Amgen Employees
Wayne Ancher
Erik and Patricia Andersen
Gary Anderson
Grace Anderson
Anonymous
John Anthony
May Arakaki
Donna Arcaro
Javad Asgari
Larry Asher III
Donald Aumer
Dr. Gloria Avrech
Bank of America Employees
Mitchell Barnhart & Amado Sierras II
Michael Barrett
Merrily Basham
Susan Basil
Marcia Bauchman
Roderick Beattie
Neil Beecher
William Bein
Bradley Bennett
William Bergens
Sheri Berk
Leonard and Dolores Berkowitz
Vicki Bicket
Bernard and Beverly Bienstock
Bryan and Alissa Binns
Steven and Doris Blackman
Steven and Katherine Blackmarr
Kenneth Bley
Stanley Blits
Steven and Suzann Bloom
Toby Bloom
Richard Bloore
Louise Bockall
Debbie Bolsky
Kathy Bouchard
Robert Bracken
Brent and Linda Bradley
Maxine Brauer
Jay Brecker & Eileen Cowin
Matthew Brigham
Dr. Herman Brooks
Marsha Brown
Rodger and Bonnie Brown
Donald and Natalie Bruce
Paula and Joel Bruce
Margaret Bryant
Dr. Dale Buchanan
Mark Burley
Frances Butler
Clark Byam
William Byerly
Clark Cameron
Capital Group
Mark Carper
Frances Carter
Daniel Castellaneta & Deborah Lacusta
Dr. Sunney Chan
Irene Chapman
Lawrence Chasson
Manuel Chavez & Maria Aguillon Chavez
Ellis Chernoff
Kenneth Chiampou
Catherine Christensen
Richard Chung
Dr. Anthony Ciancola
Pamela Citron
Giuseppina Clementi
Dan Clivner
Steven Cohen
Karen Comegys-Wortz
Carol Comparsi
Kirt Conn
Diane Connors
Kimel Conway
John Covey
Joan Cowan
Lewis and Tina Cox
Dewayne Crabtree
Keith Crasnick & Judith Tishkoff
Dr. James Cunningham
Gretchen Dalton
Dr. David Dasey
Pierre David
Bruce Davidson & Quang Ba Nguyen
Michael and Donna Davidson
Annette Davis
Lawrence Davis
Lawrence Davis
James Davison
Aileen De Borondy
Constance DeCrow
Douglas and Molly Dell'omo
Clare DesLauriers
Cameron Diaz
Steven Diener
Lawrence and Mary Ann Dillard
Timothy Doherty
Stephen Donnenfield
Wayne and Susan Doss
Arleigh and Linda Dotson
Margaret Lorrie Drenk
Ruth Drye
Kenneth Duffy
Lynn Duke
Deborah Dumas
Laurence Dunlop
Loretta Eason
Edison International Employees
Dr. Joy and Leonard Efron
Beverly Ehlers
Lawrence Eisenberg
Jeffrey and Linda Eisikowitz
David Elbert
Richard Elman
Gary Enders
Aaron and Anne Epstein
Barry Evans
Estela Evans
Alan Ewalt
Anthony Falangetti
Shelley Feinman
Esther Feldman
Dianne Felton
Stephen Ferro
Paulette Fidelibus
Ina Florman
Anthony Fratiello
Charlotte Frazer
Brenda and Thomas Freiberg
Emily Fryckman
Reiko Fujinami
Gilbert Galvan
Susannah Garcia
Jeanette Gilkison
Mike Gilliam
Howard Gleicher & Damon Chen
Victoria Goddard
Raymond Goetz
Scott Goodwin
Dr. Annette Gottlieb
Scott Green & Alex Blancarte
Donald Gregory
Ralph and Caroline Grierson
Dr. Lawrence Gross

James Gunther
Richard and Lorrie Gurewitz
Rosalie Gurrola
Fidelia Gutierrez
Elsie Hadley
Douglas and Barbara Hadsell
Harold and Melinda Haesche
George and Arlene Hall
Susan Haller & Bruce Perlman
Susan Hall-Marley
Harris Halpern
Susan Hanks
Laurie Harmon
Russell Harnden III
Hilda Haro
Helen Harris
William Harrison
Paul Hastings
Eric Hatch
Robert Hatch
Jordan Hawley
John Heilman
Susan Henderson
Kathleen Henkel
Edyth Henrickson
David Herriford
Gail Hill
Deborah and Robert Hinderliter
Melanie Hinson
Howard Hochberg
Fern Hollis
Bill Holman
The Daniel Hovenstine Trust
Elisabeth Howard
Pamela and Howard Hubert
John Huggins
Jan and Victor Hulteen
Henry Hurd
Elliot Hutkin
Stephen Iglehart
George Izaguirre
Gaynell Jackson
Marc Jacoby & Cherri Senders-Jacoby
Rosemary and Willie Jenkins
Mona Johnson
Neil Johnson
William Johnson
Leslie Joseph
JPMorgan Chase Employees
Aurora Juarez
Mark Kadzielski
Cecily Kahn

Paul Kaiser
Judy Kaufman
Bobby Kawaguchi
Laurence and Virginia Keene
Laurie and Paul Kelson
Agnetha Key Quartey
Leonard Keyes
Vicki King
Michael Kirley
B. Neal Kleiner
Dr. Paul Klinger
Dr. Lee Klosinski & David Cohen
Ani Konialian
Karen Koos
David Koz
Darryl Kramer
Joan Kritzberg
Robert Krupin & Gwen Camenson
Rebecca Kugel
Luann Kurnick
Barbara Kwong
Barbara La Pearl
Duncan Lam
Arthur Landreaux
Linda Lasley
Susan Lawrence-Munger
Rachelle Leonard
Robert Linnell
Sharon Locy
Lillie Lotto
Pauline Louie
Susan Lovell
David Luboff
Carolyn Luckenbach
Terrence Lynch & Jim Martin
Jennifer MacFarland
Macy's
Frances Maliszewski
Molly Malloy
Richard Malott
Eve Marcus
Dan Marmalefsky & Sandra Klein
Dr. Allen and Lewise Mathies
Vicki McAllister & Guadalupe Preciado-
McAllister
Alice McCain
Janice McCallum
Catherine McCarty-Procopio
Susan McCurdy
Mary McDermott
Joan McDonnell
Donald McKinney

Malicia McLinn
Dr. L. Alan and April Meadow
Frances Medrano
Dr. Jerry and Letty Mendel
Gayle and Dr. Richard Merrick
Sammy Mershon Jr.
Dr. Robert Meth
Andrew Milhan & Paul Lewis
Joseph Miller
Christine Milton
Carol Morrison
David and Barbara Motz
Mark Muller
Jonathan Murray & Harvey Reese
Mark and Nancy Nagayama
Mark Neiman
Rev. Dean and Marianne Nelson
Michael and Marianne Newman
Alicia Nibler
Ellen Nichols
Angelo Nicodemo
Setsuko Nojima
Northrop Grumman Employees
Patricia O'Blenes
Lisa Oda & Johanna Stoakes
John Oden & Dr. Mark Dizik
Judith O'Hara
Gerald Olson
Susan Olson
Richard and Harriet Orkand
Shirley Paddit
Bruce Painter
Richard Pallett
Naomi Palmer
Sandra Paskus
Rolando Pasquinelli
Patricia Pattison
David Peake
David Pearlberg
Robert Peltzman
Beverly Petralia
Dean Pitchford & Michael Mealiffe
Richard Poland
Linda Pollard & Rodger Yeaton
Renee Portenier
Richard Porter & Michele McNamee
Mike Potter
Ramon and Margaret Prado
The Louis and Harold Price Foundation
William Probst
Nadine Rachootin
J. Anthony Ramirez



Betty-Jo and Dr. Abe Ravitz
 Yvette Razouk
 Cheryl Reeves-Hayes
 Thomas Reichert
 Glenn Reisch
 Juliet Reiter
 David Richards
 Donald and Mary Richgels
 David Ringnell
 Anthony Robeda
 Carol Roberts & Michael Hiscocks
 Donna Roberts
 Adrian and Gisela Robles
 Estelle Rodkoff
 Jarrow Rogovin
 Dr. Mary Rosenfeld & Sheldon Kadish
 Brian Roskam & Michael Werb
 Bertha Ross
 Dr. David Rubin
 Gary Rubin
 William and Anne Marie Ruede
 Richard Russo
 Carmen Salazar Sicroff
 Dr. Roger and Gail Samuel
 Judith Sanders
 Liddane Sanders
 Michael Sandler
 Patricia Sandler
 City of Santa Monica Employees
 Dennis and Abigail Santiago
 Renee and Albert Sattin
 Dr. Naomi Saucier
 Sheila Saunders
 Zahra and Daniel Sauter Jr.
 Ruth Sayre
 Deborah Schaeffer
 Leonard Schaustal Jr.
 Fred Schoen
 Herbert and Anne Schoenberg
 Lucia Schultz
 Jane Schwantes
 Charles and Jackie Schwartz
 David and Donna Schwien

Laura Schwimmer & Dr. David Friedman
 Sempra Employees
 Mark and Margot Shafron
 Lori Shannon Amely
 Annette and Dan Shapiro
 Sallie Shapiro
 Dr. Mark and Elizabeth Sharzer
 Kathleen Shelton
 Toni Sherman
 Carolyn Shimono
 Irwin and Doreen Shuldiner
 Susan Sierra
 Richard and Susan Sillaman
 Regina Silver
 Jeffrey Silverman & Amelia Perez-Silverman
 Madelyn Silverman
 Florence Silverton
 Noreen and Lyle Simpson
 Gilbert and Elaine Skopp
 Grant and Elizabeth Smith
 Philip Smith
 Thomas and Sherrye Smith
 Dr. Nancy Sobel
 Leonard and Judy Soloff
 Dr. James Sparing
 John Spence
 Donald Spetner
 John Spilker
 Jessica Spitzer & Michael Wilson
 Donald Spivack
 Betty Spivak
 Lynne Steele
 Charles Stephenson
 Paul Sterba
 Dr. Monica Stewart-Bentley
 Jean Strauss Raffle & Erwin Raffle
 Thomas and Barbara Strout
 Robert Switzer & Dr. Norman Hartstein
 Paula Tait Fay
 Florence Takaaze
 Howard Tamanaha
 Kim Taylor
 John Teeples

Deborah Teltscher & William Coleman
 Craig E. Thompson & Walter Lowry
 Paul Thompson & Patrick Doonan
 Jerry Tillett
 Elizabeth Topkis
 Michael Tosti
 Alvin Trafton
 Eric Tran
 Thomas and Linda Transue
 David Trigg
 Michael Twiehaus
 Michael Umeda
 United Way of Greater Los Angeles
 Dr. John Uphold
 Anahi van Zandweghe
 Thomas Villiger
 Michael and Nancy Waldner
 Kathy Wallace
 Irene Walzer
 Eric and Karen Warren
 Glenn Watanabe
 Marietta Watkins
 Paula Webb
 Jeffrey Weinstein
 Wells Fargo
 Wells Fargo Employees
 Bill and Krista West
 Dr. Theresa Weston
 Richard Wheeler
 Michael and Edra Widener
 Mary Willey
 Gordon Wilson
 Russell Wilson
 Stanley Wilson
 Elaine Winer
 Vicki Wittrock
 Erwin Wolf
 Devene Wukas
 Carole Yamakoshi
 Fern Yee
 Joshua Zarrow
 Zenith Insurance Company
 Elliot Zwiebach

HEALTH CENTERS

APLA Health David Geffen Center

611 S. Kingsley Dr.
Los Angeles, CA 90005

APLA Health Gleicher/Chen Health Center

3743 S. La Brea Ave.
Los Angeles, CA 90016

APLA Health Center Long Beach

1043 Elm Ave., Suite 302
Long Beach, CA 90813

APLA Health Center Olympic

5901 W. Olympic Blvd., Suite 310
Los Angeles, CA 90036

APLA Health Wilshire Dental Clinic

1127 Wilshire Blvd., Suite 1504
Los Angeles, CA 90017

APLA Health Education Center

3741 S. La Brea Ave., 2nd Floor
Los Angeles, CA 90016

APLA Health Center West Hollywood

1151 N. La Brea Ave.
West Hollywood, CA 90046

APLA Health Center CDU/MLK Medical Campus

Opening 2022

Out Here Sexual Health Center

Opening 2022

VANCE NORTH NECESSITIES OF LIFE PROGRAM FOOD PANTRIES

Leon S. Aischuler Food Pantry

611 S. Kingsley Dr.
Los Angeles, CA 90005

NOLP Warehouse

7336 Bellaire Ave.
North Hollywood, CA 91605

NOLP & Project Angel Food

922 Vine St, Los Angeles, CA 90038

NOLP & Foothill AIDS Project

233 W. Harrison Ave.
Claremont, CA 91711

NOLP & AIDS Food Store

590 E. Willow St.
Long Beach, CA 90806

NOLP & JWCH (Wesley Health Center)

858 W. Jackman St.
Lancaster, CA 93534

NOLP & JWCH (Wesley Health Center)

1845 N. Fair Oaks Ave.
Pasadena, CA 91103

NOLP & JWCH (Wesley Health Center)

954 N Vermont Ave.
Los Angeles, CA 90029

NOLP & OASIS Clinic

1807 E. 120th St.
Los Angeles, CA 90059

NOLP & Common Ground

622 Rose Ave.
Venice, CA 90291

Four additional private NOLP food pantry locations included on the back cover map

